

ORDER BY NOVEMBER 25 FOR THE
BEST SEATS AT THE BEST PRICES!

SHAW 20
FESTIVAL 24



TIM CARROLL, ARTISTIC DIRECTOR
TIM JENNINGS, EXECUTIVE DIRECTOR
KIMBERLEY RAMPERSAD, ASSOCIATE ARTISTIC DIRECTOR

APRIL 6 - DECEMBER 22
NIAGARA-ON-THE-LAKE, ONTARIO

CONTENTS

- 1 Welcome from Artistic Director Tim Carroll
- 2 Festival Theatre
- 4 Royal George Theatre
- 6 Jackie Maxwell Studio Theatre
- 8 Spiegeltent
- 10 Holiday Season
- 12 Ticket Prices and Theatres
- 13 Friends 2024 Priority Ordering Dates; How to Order; Accessibility & Policies
- 14 Ways to Save
- 16 Calendar
- 32 Message from Executive Director Tim Jennings
- 33 Governors Council and Save the Date Events
- 34 Beyond the Stage for Friends
- 35 Beyond the Stage for All
- 39 Beyond the Stage for Young People & Educators
- 40 Season Sponsors
- 41 Planning Form

THE BOX OFFICE AND DEVELOPMENT TEAMS ARE HERE FOR YOU!

Call 1-800-657-1106 followed by the extension of the person you want to talk to or email us:

Events/Opening	events@shawfest.com	ext 2367
Major Gifts	majorgifts@shawfest.com	ext 2260
Legacy Giving	legacygiving@shawfest.com	ext 2397
Governors Council	governorscouncil@shawfest.com	ext 2208
Membership	friends@shawfest.com	ext 2556
Corporate Partnerships	corporatepartners@shawfest.com	ext 2226
Box Office	boxoffice@shawfest.com	1-800-511-7429

We acknowledge and honour the land upon which we gather as the historic and traditional territory of First Nations peoples. In particular, we recognize and thank the Neutral Nation, the Mississauga and the Haudenosaunee for their stewardship of these lands over millennia.

REMEMBERING THE JOY OF SHARED EXPERIENCE

If you saw the season we have just closed, you will know why so many people are saying that summer 2023 is The Shaw's most remarkable yet. Certainly, the scale of ambition was unlike anything we have ever attempted: an astonishing range of great theatre experiences in all our theatres, plus a dizzying array of concerts and events throughout our gardens and in our dazzling Spiegeltent. Add to that a record number of outreach and engagement events, and you have something pretty special.

But we are not resting on our laurels: quite the contrary. I believe that this year has shown what the Shaw Festival could be: a truly festive place, buzzing with life, fun and passion every day. We have big plans to make it so, and this coming season will represent another big step in that direction: even more events in the Spiegeltent (if you haven't been inside yet,

what were you thinking?), great popular hits like *My Fair Lady*, *Sherlock Holmes and the Mystery of the Human Heart* and *One Man, Two Guvnors*, and a mouthwatering Royal George season with Agatha Christie's best murder mystery, *Witness for the Prosecution*, a Shaw favourite in *Candida*, and the evergreen classic *The Secret Garden*. These are all shows we expect to sell like hot cakes: early ordering has never been more important!

In the Jackie Maxwell Studio Theatre we will continue our quest to find stunning plays you won't see anywhere else: Philip Akin, on a triumphant roll after *Trouble In Mind* (2021) and August Wilson's *Gem of the Ocean* (2022), will direct Marcus Gardley's steamy melodrama *The House That Will Not Stand*, while National Arts Centre Artistic Director for English Theatre Nina Lee Aquino will direct *Snow in Midsummer*, a magical telling of an ancient Chinese legend. *The Orphan of Chao*, our Royal George lunchtime show, will make a perfect companion piece. Where better than a sacred ancient meeting place like Niagara for people from every culture and background to encounter each other's artistic heritage?

Our mission is to create real human connections. It is about getting out of our isolated bubbles and remembering the joy of shared experience. Come to Shaw and rediscover your imagination, your curiosity and your capacity to be delighted.



TIM CARROLL
ARTISTIC DIRECTOR



FESTIVAL THEATRE

LERNER AND LOEWE'S MY FAIR LADY

Book and Lyrics by Alan Jay Lerner

Music by Frederick Loewe

**Adapted from Bernard Shaw's Play and
Gabriel Pascal's Motion Picture *Pygmalion***

Co-Directed by Kimberley Rampersad and Tim Carroll

MAY 4 – DECEMBER 22

This timeless classic has been dazzling audiences since its debut on Broadway in 1956. Based on the play *Pygmalion* by Bernard Shaw, it's the story of Eliza Doolittle, a cockney flower girl caught in the middle of a bet between Henry Higgins, a professor of phonetics and Colonel Pickering, a fellow linguist. With unforgettable songs such as "On the Street Where You Live," "I Could Have Danced All Night" and "Wouldn't It Be Lovely?" *My Fair Lady* is one of the most beloved musicals of all time - and now it's returning to The Shaw!





ONE MAN, TWO GUVNORS

By Richard Bean

Based on *The Servant of Two Masters* by Carlo Goldoni

With songs by Grant Olding

Directed by Chris Abraham

JUNE 6 – OCTOBER 13

What do you do when you're employed by a murderous gangster and a wealthy snob? You do everything in your power to make sure they never meet! This modern take on Carlo Goldoni's Commedia dell'arte classic, *The Servant of Two Masters*, has it all: romantic romps, criminal capers and some of the funniest dialogue this side of Brighton. It's a sure-fire crowd-pleaser that will not only keep you on the edge of your seat but will pull you right out of it!

SHERLOCK HOLMES AND THE MYSTERY OF THE HUMAN HEART

By Reginald Candy

Based on characters by Sir Arthur Conan Doyle

Directed by Craig Hall

JULY 24 – OCTOBER 13

Sherlock Holmes has never met a villain so clever, so compelling and so lethal. Has Holmes finally met his match? Find out in this new play by Reginald Candy, which delves deeper into the lives of the legendary detective, his trusted confidante Watson and Mrs Hudson, the landlady of 221B Baker Street. It's the third in our series, and it's filled with enough twists and turns to leave even Sir Arthur Conan Doyle guessing what happens next. The game is afoot!

ROYAL GEORGE THEATRE



AGATHA CHRISTIE'S WITNESS FOR THE PROSECUTION

Directed by Alistair Newton

APRIL 6 – OCTOBER 13

When a wealthy, older woman is found brutally murdered, there is only one suspect: her handsome, charming, and much-younger lover. Sure, he has a motive, but did he actually do it? Due to a strict, no-spoilers policy, we can't answer that question. Here's what we can say: the play is full of clever twists, witty dialogue and rising tension. If you're a fan of riveting courtroom dramas, don't miss this shocker.

THE SECRET GARDEN

A Play with Songs

Based on the novel by Frances Hodgson Burnett

Adapted for the stage by Jay Turvey and Paul Sportelli

Directed by Jay Turvey

MAY 31 – OCTOBER 13

Mary Lennox is a selfish, spoiled ten-year-old whose life takes a turn for the worse after she is left orphaned in India. Forced to move in with her reclusive uncle in Yorkshire, she is lonely and miserable—until she discovers a secret garden that's been locked away for years. As she tends to the dormant roses and overgrown vines, she soon finds that the flowers aren't the only things that are beginning to bloom. Adapted from Frances Hodgson Burnett's beloved children's novel, this enchanting story explores the theme of finding your true nature where you least expect it.



LUNCHTIME ONE-ACT **THE ORPHAN OF CHAO**

Adapted by Michael Man
Based on the classical Chinese drama,
The Great Revenge of the Zhao Orphan
By Ji Junxiang
Directed by Courtney Ch'ng Lancaster

JUNE 13 – OCTOBER 5

Considered by many to be the Chinese *Hamlet*, this is an epic play about revenge, morality, and family. After a bloody palace power struggle leaves an infant orphaned, a benevolent doctor sacrifices his own son to keep the child alive, so he can avenge his family when he comes of age. It's one of the oldest plays in the Chinese canon, it combines beautiful music and insightful dialogue to create a powerful story that will stay with you long after the curtain closes. It's a powerful reminder that some family trees are rooted in blood and secrets.

CANDIDA

By Bernard Shaw
Directed by Severn Thompson

JULY 13 – OCTOBER 11

Caught in a love triangle with her husband, a charming reverend, and the young man he found sleeping outside, Candida must choose between her head and her heart in this classic comedy from Bernard Shaw. Will she remain the lawfully wedded partner of a pastor, or become the paramour of a poet? Her choice may surprise you, but the story will most certainly delight you.



THE HOUSE THAT WILL NOT STAND

By Marcus Gardley
Directed by Philip Akin

JUNE 12 – OCTOBER 12

New Orleans in the early 19th century. Beartrice, a wealthy free Black woman, finds herself at risk of losing everything after the death of her affluent, white lover. As racial divides widen, and the world around her begins to crumble, she must do whatever she can to keep her family together. Inspired by Federico García Lorca's *The House of Bernarda Alba*, this family drama by Marcus Gardley is about rivalry, passion and one woman's struggle for survival. **MATURE CONTENT**

SNOW IN MIDSUMMER

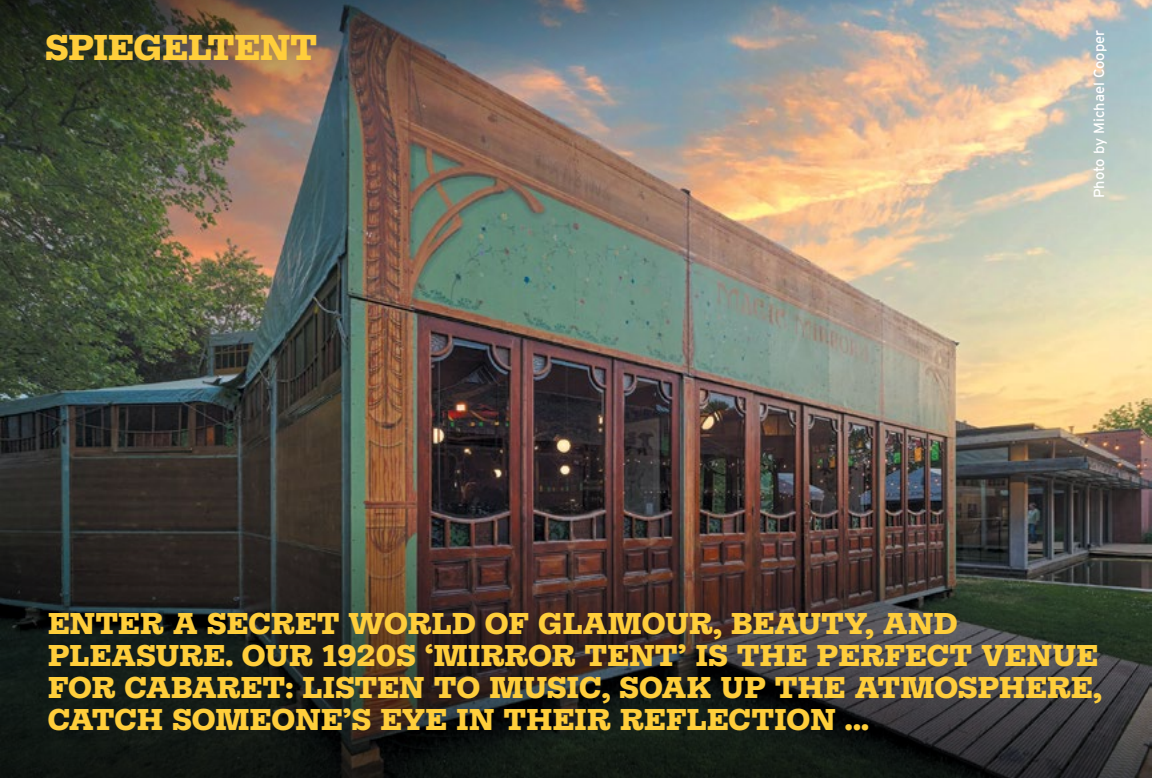
By Frances Ya-Chu Cowhig
Based on the classical Chinese drama,
The Injustice of Dou E That Moved Heaven and Earth
By Guan Hanqing
Directed by Nina Lee Aquino

AUGUST 8 – OCTOBER 5

Part ghost story. Part murder mystery. Part thriller. This is the tale of Dou Yi, a young widow who is executed for committing murder. Before the sentence is passed, she places a curse on her town: if she is innocent, snow will fall in the middle of the summer and a devastating drought will bring people to their knees. Years later, all hope for salvation rests on a businesswoman and her young daughter. Can they make things right? Will the weather change? Adapted from a 13th century drama from the Yuan Dynasty, this contemporary update by Frances Ya-Chu Cowhig is utterly spellbinding. **MATURE CONTENT**

SPIEGELTENT

Photo by Michael Cooper



ENTER A SECRET WORLD OF GLAMOUR, BEAUTY, AND PLEASURE. OUR 1920S 'MIRROR TENT' IS THE PERFECT VENUE FOR CABARET: LISTEN TO MUSIC, SOAK UP THE ATMOSPHERE, CATCH SOMEONE'S EYE IN THEIR REFLECTION ...

THE SHAW VARIETY SHOW

MAY 17 - OCTOBER 6

Created by members of the Ensemble, this good old-fashioned variety show is packed with comedy, music and magic.

THE ROLL OF SHAW

MAY 30 - SEPTEMBER 28

Created and directed by Travis Seetoo

An improvised and interactive adventure featuring members of the audience and Bernard Shaw's most famous characters.

KABARETT

JUNE 14 - OCTOBER 12

A cabaret featuring music from Germany's Weimar era.

COTTON CLUB

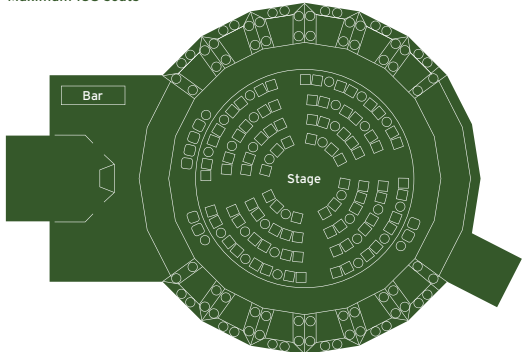
JULY 17 - OCTOBER 11

A musical revue full of sizzling numbers from New York's hottest hot spot.



SPIEGELTENT

Seating Chart
Maximum 168 seats



FOR PRICING SEE PAGE 12

CONCERTS & EVENTS



COFFEE CONCERTS

JUNE 9, JULY 28, SEPTEMBER 29

Classical music concerts performed by members of the Shaw Festival Orchestra. **\$10**

FOOTLIGHTS

**JULY 6, AUGUST 3, AUGUST 24,
SEPTEMBER 21, SEPTEMBER 27
AND OCTOBER 5**

Revel in the hits from the Golden Age of Broadway. **\$30**

SPEAKEASIES

JULY 27, AUGUST 31, SEPTEMBER 21

An evening of Jazz music featuring members of the Shaw Orchestra and special guests. **\$20**

WHAT'S IN YOUR SONGBOOK

JULY 30, AUGUST 23, SEPTEMBER 11

An intimate evening of songs and stories. Hosted by Ryan deSouza, Associate Music Director, Company members sing songs from their audition songbooks and talk about all things musical theatre, from what inspires their song choices to stories from the audition and rehearsal rooms. **\$20**

GOSPEL CHOIR

JULY 21, AUGUST 25, SEPTEMBER 22

Big, beautiful, uplifting vocals to take your breath away! In the Festival gardens, enjoy this euphoric and inspirational musical experience performed by the glorious voices in our Company. **\$20**

POP-UP PATIO

**THURSDAYS FROM JULY 11 TO AUGUST
29, FOLLOWING THE MATINEE
PERFORMANCES**

Great food, refreshments and live music in the Baillie Courtyard.

**ROYAL GEORGE THEATRE
HOLIDAY SEASON**

A CHRISTMAS CAROL

By Charles Dickens

Adapted and originally directed by Tim Carroll

Directed by Ryan G. Hinds

NOVEMBER 8 – DECEMBER 22

The magic of Christmas returns as does the miserly Ebenezer Scrooge! *A Christmas Carol* is the gift that keeps on giving and is the perfect annual reminder of what the Christmas spirit is all about. The perfect holiday treat is in Niagara-on-the-Lake, the merriest of holiday destinations.



FESTIVAL THEATRE HOLIDAY SEASON

EXTENDED THROUGH THE HOLIDAYS! LERNER AND LOEWE'S MY FAIR LADY

Book and Lyrics by Alan Jay Lerner

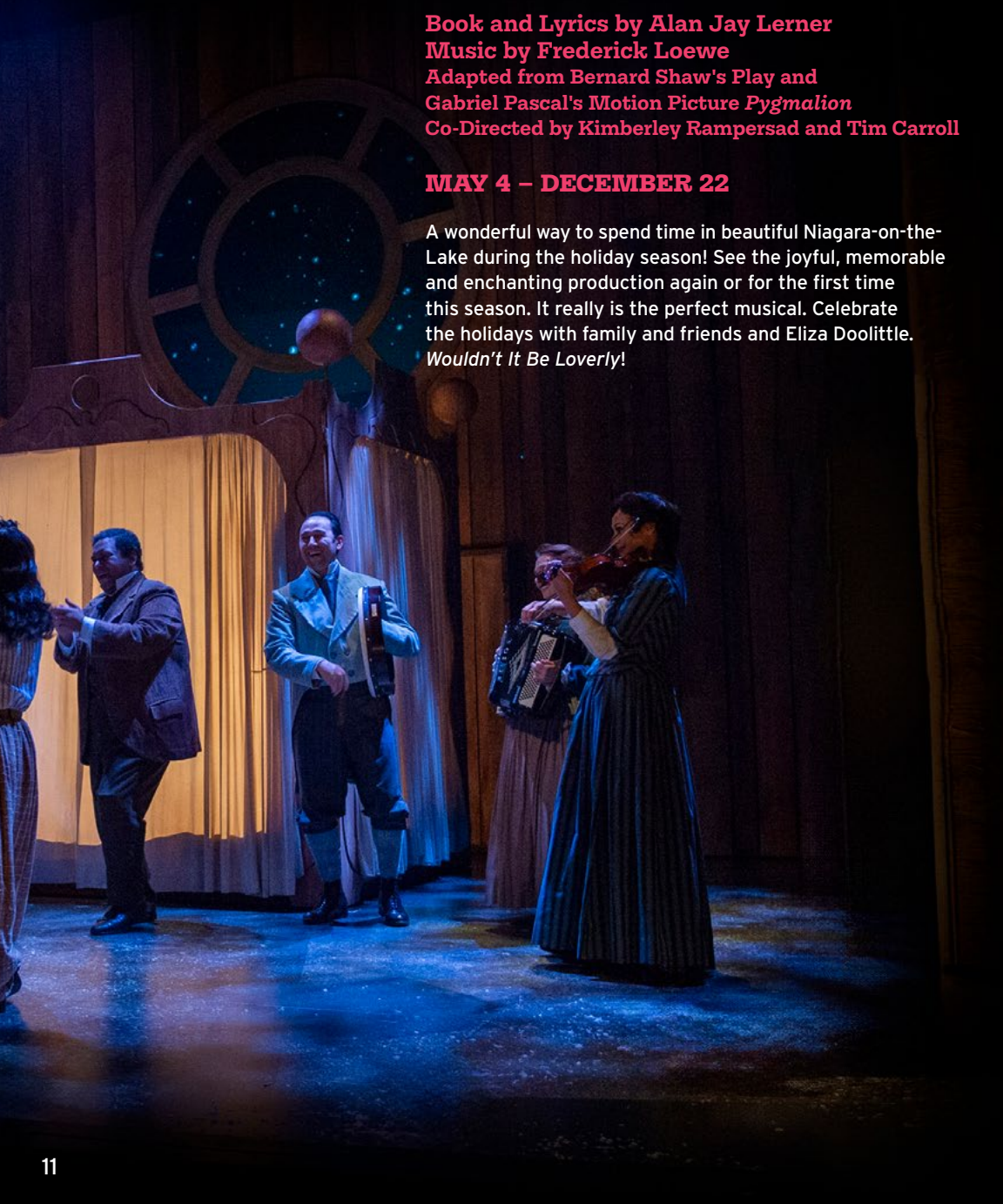
Music by Frederick Loewe

**Adapted from Bernard Shaw's Play and
Gabriel Pascal's Motion Picture *Pygmalion***

Co-Directed by Kimberley Rampersad and Tim Carroll

MAY 4 – DECEMBER 22

A wonderful way to spend time in beautiful Niagara-on-the-Lake during the holiday season! See the joyful, memorable and enchanting production again or for the first time this season. It really is the perfect musical. Celebrate the holidays with family and friends and Eliza Doolittle. *Wouldn't It Be Lovely!*



TICKET PRICES & THEATRES

Book early, for the best seats at the best prices. Tickets are subject to change after January 31, 2024. To create a more intimate and memorable theatre experience, we offer seats at the front of the house first and then open additional seats as needed. If you do not find seating available that meets your needs, call the Box Office and we will do our best to accommodate you.

MUSICAL <i>(My Fair Lady)</i>	Single Show			
	Platinum	Gold	Blue	Purple
Preview performances	\$114	\$97	\$73	\$35
Regular performances	\$163	\$139	\$105	\$45

NON-MUSICAL	Single Show			
	Platinum	Gold	Blue	Purple
Preview performances	\$101	\$86	\$64	\$30
Regular performances	\$145	\$123	\$92	\$40

FAMILY <i>(A Christmas Carol)</i>	Single Show			
	Platinum	Gold	Blue	Purple
Preview performances	\$69	\$57	\$40	\$30
Regular performances	\$99	\$81	\$57	\$40

Lunchtime <i>(The Orphan of Chao)</i>	All Performances - \$39
--	-------------------------

SPIEGELTENT Events & seating chart see page 8	All Performances		
	Gold	Blue	Purple
	\$60	\$45	\$35

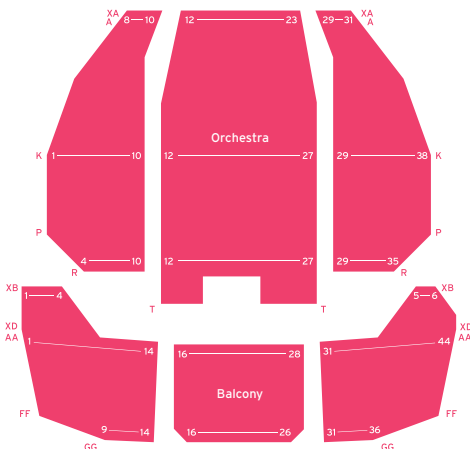
Youth tickets	\$25, unless otherwise stated
----------------------	-------------------------------

Prices in CDN \$, excludes tax. Prices, artists, seat sections and performances subject to change. For Ways to Save and ticket packages, see page 14.

Visit shawfest.com for more detailed seating maps. Maps subject to change.

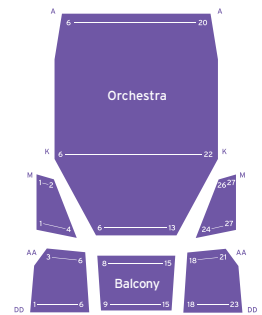
FESTIVAL THEATRE

10 Queen's Parade
Maximum 856-seat modern theatre includes the licensed Lobby Café and The Shawp
Special Access seating available



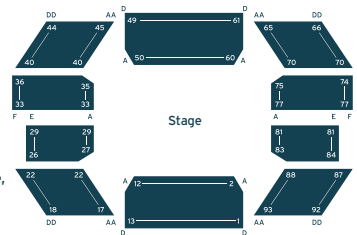
ROYAL GEORGE THEATRE

85 Queen Street
Maximum 305-seat theatre in a turn-of-the-century vaudeville house
Special Access seating available



JACKIE MAXWELL STUDIO THEATRE

10 Queen's Parade
Maximum 267-seat theatre, our most intimate space
Special Access seating available



HOW TO ORDER

PRIORITY BOOKING PERIOD NOVEMBER 4 TO NOVEMBER 24

Ordering begins on the following dates, according to your level of support:

November 4	Governors Council and Premier \$1000+
November 6	Sustaining, Contributing and Business \$400+
November 9	Supporting \$200+
November 11	Annual \$100+

PLEASE HAVE YOUR MEMBERSHIP ACCOUNT NUMBER AVAILABLE WHEN YOU BOOK ONLINE

shawfest.com	Details below
Phone	1-800-511-7429 905-468-2172
In-Person	Festival Theatre Box Office
Mail	Shaw Festival, Box 774, Niagara-on-the-Lake, ON L0S 1J0

ORDERING YOUR TICKETS ONLINE IS SIMPLE.

GO TO SHAWFEST.COM

1. Click on the **Friends Order Now** box
2. Log in to take advantage of your early ordering privileges
3. Navigate to *What's On & Tickets* to access the 2024 Season calendar
4. Click **Buy Now** on your choice of performance(s)

HOURS OF OPERATION

Nov 4 - Dec 23 Daily 9-5, open until start time of any evening performance

Closed from Dec 24, 3pm until Jan 2

Jan 2 - Apr 19 Monday to Saturday 9-5

ACCESSIBILITY

Special Access Seating

There are no elevators at the Festival and Royal George Theatres. Special access seating is available at all theatres. Please arrive at least 30 minutes prior to the performance. Accessible washrooms are available.

Assistive Listening Devices

Reserve when you book your tickets. Quantities are limited.

Relaxed Performances

A relaxed performance is designed to provide an inclusive, relaxed environment for everyone, including individuals who may feel uncomfortable or overwhelmed in a traditional theatre setting.

My Fair Lady - June 5, 2pm

A Christmas Carol - December 4, 11am

More accessibility details at shawfest.com/accessibility

POLICIES

Exchanges

Tickets may be exchanged for another performance during the 2024 Season (subject to availability) at least 24 hrs before the performance. Any difference in price will be charged accordingly. Prices based on price of tickets at time of exchange. A fee of \$4.50 per ticket will apply.

Friends Exchange Benefit: Tickets ordered by Friends up to January 31 may be exchanged once for an equivalent section and performance type at no additional cost. Exchange fees are waived and new tickets will not be subject to changes in pricing. Any upgrades (better seating or different performance types) will benefit from early booking prices. This benefit is valid on the first exchange for each ticket and is subject to availability.

Service Charge

Waived during the Friends Priority Booking Period – another great benefit of your Membership. As of November 25, a \$12 (tax in) service charge per order applies to all orders except for in-person orders which have a service charge of \$1 per ticket, to a maximum of \$10 per order.

Tax

All tickets, services, and activities are listed without tax.

Children

See Youth Pricing (page 15) for special prices for children. Tickets must be purchased for any child attending a performance and children must be seated with a parent or guardian. Babes-in-arms are not permitted in the theatres. Ask us about age recommendations.

Shaw Festival Privacy Policy

Available at shawfest.com/privacy or at 1-800-511-7429.

Scent-Free Facilities

In the interest of other patrons, please arrive perfume/cologne-free.

Duty of Care

Please visit shawfest.com for The Shaw's up-to-date Duty of Care health-related protocols and policies.

WAYS TO SAVE

FRIENDS PRIORITY BOOKING PERIOD

Friends of The Shaw benefit from first access to every performance during the priority booking period. In addition to first access, tickets ordered by Friends of The Shaw up to January 31 may be exchanged once for an equivalent section and performance type at no additional cost. As of February 1, ticket prices are subject to change.

SEASON'S PASS

**A SHAW FESTIVAL BESTSELLER!
ENJOY YOUR FAVOURITE PRODUCTIONS AGAIN AND AGAIN.**

The pass entitles our Friends to reserve tickets within 60 days (everyone else - 30 days) of any performance of our regular season, up to October 31. The Season's Pass is valid on nine plays in the Festival, Royal George and Studio Theatres including *The Orphan of Chao* the lunchtime one-act. It also includes a 25% discount on tickets to November and December performances of Lerner and Loewe's *My Fair Lady* and *A Christmas Carol*.

SEASON'S PASS PLUS

In addition to the Season's Pass benefits, the Season's Pass *Plus* lets you book one ticket to each of the nine plays right away! To upgrade your Membership for access to the Season's Pass *Plus*, contact Membership at 1-800-657-1106 ext. 2556.

• \$525 Blue seating • \$625 Gold seating • \$750 Platinum seating

Only 1000 Season's Passes will be made available in 2024. Don't delay!

For Friends of
The Shaw at the
Sustaining level
and above (\$600+)

Pass is non-transferable and is good for one ticket to be used by the Season's Pass holder of record per performance excluding Openings, November and December performances of *My Fair Lady*, *A Christmas Carol*, and *Spiegel tent* events. Season's Pass tickets must be picked up in person by each individual Season's Pass holder of record and photo ID must be presented at the time of the pickup. Tickets may only be picked up within two hours of each performance. Reservations are subject to availability at the time of booking. The Shaw reserves the right to limit quantities and restrict eligibility of any performance. Tickets to all productions are not guaranteed. Not applicable for wait-list performances.

THE SHAW EXPRESS FROM TORONTO

\$29 early booking price until January 31

Book before January 31 and enjoy the special early booking rate of \$29 return. Pay \$34 return per person after that. Must be on same date(s) as theatre ticket(s). Available May-October and during the Holiday Season. And remember, the Shaw Express stops in Burlington.

Bus schedule available on the calendar pages at shawfest.com

MULTI-PLAY PACKAGES

**BUY MORE,
SAVE MORE.**

Buy 3+ shows, save 15%

Buy 5+ shows, save 20%

– it's like getting one show for free!

Buy 8+ shows, save 25% – even better!

All performances must be purchased at one time. Discount granted on lowest number of seats purchased throughout all performances. Applicable on Regular and Preview pricing. Cannot be used in conjunction with other offers or packages. A *Christmas Carol* and *Spiegelteint* events excluded. Not applicable on previously purchased tickets. Discount price based on price at time of purchase. Limit of 8 tickets per performance.



Andrew Broderick backstage (*The Amen Corner*)



Tama Martin backstage (*The Amen Corner*)

SPECIAL MATINEES FOR SENIORS 65+

Tickets from \$39 on select performances:
Marked SM on calendar.

Special Matinees for Seniors sponsored by Holiday Inn Express & Staybridge Suites Niagara-on-the-Lake

SPECIAL MATINEES FOR STUDENTS

Students can book \$25 tickets in any seating locations at Special Matinee performances*, marked SM on the calendar. Valid student ID required at time of pickup for each student ticket holder.

UNDER 35 PRICING

\$35 Blue seating for all performances for anyone up to 34 years old. ID required for each 'Under 35' ticket holder at time of pickup.

YOUTH PRICING

Save on tickets for children 18 years and under. Purchase a regularly-priced adult ticket, or a senior-priced ticket, and purchase youth tickets for just \$25 each. Ask about family-friendly productions.

PREVIEW PERFORMANCES

Save 30% on all preview performances.
Marked P on the calendar. Prices start at \$30.

THEATRE FOR \$40

Regular ticket prices start at \$40 for many performances. Limited availability.

All Ways to Save offerings are based on availability, apply only at the time of purchase and cannot be applied retroactively or used in conjunction with other offers. Limit of 8 tickets per offer. Students/Under 35: no ID, no discount. Discounts do not apply to Openings, *Spiegelteint* and concerts and events. Prices listed are per person, do not include tax or handling fee and are subject to change.

*Non-seniors/non-students booking SM performances pay regular prices.

APRIL

Sunday

Monday

Tuesday

Wednesday

	1	2	3
7 Witness 1pm P SM	8	9	10 Witness 2pm P SM
14	15	16	17 7PM ART OF IDEAS
21 Witness 1pm P	22	23	24 7PM ART OF IDEAS Witness 2pm P SM
28 Witness 1pm SM	29	30	



Thursday

Friday

Saturday

4	5	6 Witness 2pm P SM
11 Witness 2pm P SM	12	13 SHIVAREE Witness 2pm P SM
18 Witness 2pm P SM	19 Witness 2pm P SM	20 Witness 8pm P
25 SHAW BOXING Witness 2pm SM	26 FRIENDS REHEARSAL LADY	27 Witness 8pm

FESTIVAL THEATRE

My Fair Lady
One Man, Two Guvnors
Sherlock Holmes
and the Mystery of
the Human Heart

ROYAL GEORGE THEATRE

Witness for the
Prosecution
The Secret Garden
The Orphan of Chao
Candida

JACKIE MAXWELL STUDIO THEATRE

The House That Will
Not Stand
Snow in Midsummer

SPIEGELTENT

The Shaw Variety Show
The Roll of Shaw
Kabarett
Cotton Club

HOLIDAY SEASON

My Fair Lady
A Christmas Carol

PERFORMANCE CODES

P Preview
SM Special Matinee

THE SHAW EXPRESS

Direct from downtown
Toronto and Burlington

Only \$34 return

See calendar for Shaw
Express dates.



MAY

Sunday

Monday

Tuesday

Wednesday

			1 Witness 2pm SM
5 THE FURLONG 10AM BACKSTAGE TOUR Witness 1pm	6	7	8 Lady 2pm P SM Witness 2pm B
12 MOTHER'S DAY 10AM MOTHER'S DAY TEA Lady 1pm P SM	13	14	15 Witness 8pm
19 10 AM BACKSTAGE TOUR Witness 7pm	20 VICTORIA DAY	21 11AM BACKSTAGE TOUR	22 11AM BACKSTAGE TOUR Lady 2pm P SM Witness 8pm
26 10AM BACKSTAGE TOUR Lady 1pm SM Witness 1pm 0	27	28 11AM BACKSTAGE TOUR	29 11AM BACKSTAGE TOUR FRIENDS POST-SHOW CHAT Lady 2pm Witness 2pm B

MOTHER'S DAY TEA

MAY 12

Indulge in an elegant elevenses tea on Mother's Day, in the fabulous Spiegeltent. Add on the workshop to make a fascinator to wear during tea and take in Lerner and Loewe's *My Fair Lady* together!
Tea \$85 + Workshop \$10. Show ticket extra.



Julia Course and Gabriella Sundar Singh backstage (*The Importance of Being Earnest*, 2022)

Thursday

Friday

Saturday

<p>2 Witness 2pm SM</p>	<p>3 Witness 8pm</p>	<p>4 THE FURLONG TIAM BACKSTAGE TOUR Lady 2pm P Witness 8pm</p>
<p>9</p>	<p>10 Lady 8pm P</p>	<p>11 TIAM BACKSTAGE TOUR Witness 8pm</p>
<p>16 Lady 2pm P Witness 2pm</p>	<p>17 Variety 8pm P</p>	<p>18 TIAM BACKSTAGE TOUR Lady 2pm P SM Witness 2pm Variety 8pm P</p>
<p>23 DRLC REHEARSAL GARDEN Lady 2pm SM Variety 8pm P</p>	<p>24 Variety 8pm 0</p>	<p>25 TIAM BACKSTAGE TOUR Lady 5pm 0 Witness 8pm</p>
<p>30 GC REHEARSAL GUVNORS Roll 2pm P Variety 8pm</p>	<p>31 Garden 2pm P SM Witness 8pm</p>	

FESTIVAL THEATRE

My Fair Lady
One Man, Two Guvnors
Sherlock Holmes
and the Mystery of
the Human Heart

ROYAL GEORGE THEATRE

Witness for the
Prosecution
The Secret Garden
The Orphan of Chao
Candida

JACKIE MAXWELL STUDIO THEATRE

The House That Will
Not Stand
Snow in Midsummer

SPIEGELTENT

The Shaw Variety Show
The Roll of Shaw
Kabarett
Cotton Club

HOLIDAY SEASON

My Fair Lady
A Christmas Carol

PERFORMANCE CODES

P Preview
SM Special Matinee
0 Opening Performance
B Shaw Express Bus

LET US WINE AND DINE YOU

Arriving early? Our charming Festival Theatre Lobby Café offers plenty of tasty treats, cold entrées, soups and sandwiches. Pair it with a refreshing glass of word-renowned Niagara wine and let the excitement for the show begin.

Shaw insider tip: Skip the line-up and pre-order your drink so it's waiting for you at intermission!

JUNE

Sunday

Monday

Tuesday

Wednesday

THE SHAW GUILD GARDEN TOUR

A self-guided tour of gardens throughout Niagara-on-the-Lake.

\$30 | \$25 before April 1 | \$35 on event day

SATURDAY JUNE 15, 10AM-3PM

Tickets at shawguild.ca

<p>2</p> <p>10AM BACKSTAGE TOUR</p> <p>Garden 1pm P SM</p> <p>Roll 1pm P</p>	<p>3</p>	<p>4</p> <p>11AM BACKSTAGE TOUR</p>	<p>5</p> <p>SPRING PLAY BY PLAY</p> <p>11AM BACKSTAGE TOUR</p> <p>FRIENDS POST-SHOW CHAT</p> <p>Lady 2pm R</p> <p>Witness 2pm</p> <p>Variety 8pm</p> <p>B</p>
<p>9</p> <p>10AM BACKSTAGE TOUR</p> <p>10:30AM COFFEE CONCERT</p> <p>Guvnors 1pm P SM</p> <p>Garden 1pm P SM</p> <p>Witness 7pm</p>	<p>10</p>	<p>11</p> <p>11AM BACKSTAGE TOUR</p> <p>Witness 2pm</p>	<p>12</p> <p>11AM BACKSTAGE TOUR</p> <p>FRIENDS POST-SHOW CHAT</p> <p>Lady 2pm SM</p> <p>House 2pm P SM</p> <p>Guvnors 8pm P</p> <p>Variety 8pm</p> <p>B</p>
<p>16</p> <p>FATHER'S DAY</p> <p>10AM BACKSTAGE TOUR</p> <p>10AM FATHER'S DAY LUNCH</p> <p>Guvnors 1pm P</p> <p>House 1pm P SM</p> <p>Variety 7pm</p>	<p>17</p>	<p>18</p> <p>11AM BACKSTAGE TOUR</p>	<p>19</p> <p>JUNETEENTH (US)</p> <p>11AM BACKSTAGE TOUR</p> <p>Orphan 11:30am P</p> <p>Guvnors 2pm P</p> <p>Garden 2pm P</p> <p>House 2pm P SM</p> <p>Kabarett 2pm P</p> <p>Lady 8pm</p> <p>Witness 8pm</p> <p>B</p>
<p>23</p> <p>10AM BACKSTAGE TOUR</p> <p>Guvnors 1pm</p> <p>Garden 1pm 0</p> <p>Lady 7pm</p> <p>House 7pm</p>	<p>24</p>	<p>25</p> <p>11AM BACKSTAGE TOUR</p> <p>Witness 2pm</p>	<p>26</p> <p>11AM BACKSTAGE TOUR</p> <p>Orphan 11:30am</p> <p>Garden 2pm</p> <p>Lady 8pm</p> <p>House 8pm</p> <p>Variety 8pm</p>
<p>30</p> <p>10AM BACKSTAGE TOUR</p> <p>Guvnors 1pm SM</p> <p>House 1pm SM</p> <p>Kabarett 1pm</p> <p>Variety 7pm</p>			

MULTI-PLAY PACKAGES

Buy 3+ shows, save 15%

Buy 5+ shows, save 20%

- it's like getting one show for free!

Buy 8+ shows, save 25%

- even better! It's like getting two shows for free.

Buy more, save more. See page 15.



Damien Atkins (Noël Coward's *Blithe Spirit*)

Thursday

Friday

Saturday

		<p>1 B</p> <p>11AM BACKSTAGE TOUR</p> <p>Lady 2pm Witness 2pm Variety 8pm</p>
<p>6 B</p> <p>SPRING PLAY BY PLAY 10AM ART OF IDEAS</p> <p>Guvnors 2pm P SM Garden 2pm P SM Lady 8pm Witness 8pm</p>	<p>7 B</p> <p>SPRING PLAY BY PLAY</p> <p>Lady 2pm SM Roll 8pm P</p>	<p>8 B</p> <p>11AM BACKSTAGE TOUR 12:30PM MINI-MANNERS WORKSHOP</p> <p>Guvnors 2pm P SM Garden 2pm P Lady 8pm Variety 8pm</p>
<p>13 B</p> <p>Orphan 11:30am P Guvnors 2pm P SM Garden 2pm P House 2pm P SM Roll 2pm</p>	<p>14 B</p> <p>Lady 2pm SM Variety 2pm Kabarett 8pm P</p>	<p>15 B</p> <p>THE SHAW GUILD GARDEN TOUR 11AM BACKSTAGE TOUR</p> <p>Orphan 11:30am P Guvnors 2pm P Garden 2pm P SM House 2pm P SM Lady 8pm Witness 8pm</p>
<p>20</p> <p>Orphan 11:30am P Garden 2pm SM Lady 8pm House 8pm Variety 8pm</p>	<p>21 B</p> <p>NATIONAL INDIGENOUS PEOPLE'S DAY</p> <p>Orphan 11:30am Guvnors 2pm Lady 8pm House 8pm 0</p>	<p>22</p> <p>11AM BACKSTAGE TOUR</p> <p>Orphan 11:30am 0 Kabarett 1pm 0 Guvnors 5pm 0 Garden 8pm</p>
<p>27 B</p> <p>Lady 2pm SM House 8pm</p>	<p>28 B</p> <p>Orphan 11:30am Guvnors 2pm Garden 2pm House 2pm SM Witness 8pm Kabarett 8pm</p>	<p>29 B</p> <p>11AM BACKSTAGE TOUR</p> <p>Orphan 11:30am Lady 2pm SM Witness 2pm SM Guvnors 8pm House 8pm Roll 8pm</p>

FESTIVAL THEATRE

My Fair Lady
One Man, Two Guvnors
Sherlock Holmes
and the Mystery of
the Human Heart

ROYAL GEORGE THEATRE

Witness for the
Prosecution
The Secret Garden
The Orphan of Chao
Candida

JACKIE MAXWELL STUDIO THEATRE

The House That Will
Not Stand
Snow in Midsummer

SPIEGELTENT

The Shaw Variety Show
The Roll of Shaw
Kabarett
Cotton Club

HOLIDAY SEASON

My Fair Lady
A Christmas Carol

PERFORMANCE CODES

P Preview
SM Special Matinee
R Relaxed
0 Opening Performance
B Shaw Express Bus

FATHER'S DAY PLOUGHMAN'S LUNCH

JUNE 16

Celebrate Dad with a pint and a hearty ploughman's lunch on Father's Day, in the spectacular Spiegel tent. Add on the workshop to make a boutonniere to wear during lunch, and enjoy *One Man, Two Guvnors* as a family. **Ploughman's lunch \$85 + Workshop \$10. Show ticket extra.**



JULY

Sunday

Monday

Tuesday

Wednesday

	<p>1</p> <p>CANADA DAY</p>	<p>2</p> <p>11AM BACKSTAGE TOUR</p>	<p>3</p> <p>11AM BACKSTAGE TOUR</p> <p>Witness 2pm</p> <p>Garden 8pm</p> <p>House 8pm</p>
<p>7</p> <p>10AM BACKSTAGE TOUR</p> <p>10AM ART OF IDEAS</p> <p>Guvnors 1pm</p> <p>House 1pm</p> <p>Witness 7pm</p> <p>Kabarett 7pm</p>	<p>8</p>	<p>9</p> <p>11AM BACKSTAGE TOUR</p> <p>TUESDAY Q&A</p> <p>Guvnors 2pm</p> <p>House 2pm</p> <p>Witness 8pm</p>	<p>10</p> <p>11AM BACKSTAGE TOUR</p> <p>Orphan 11:30am</p> <p>Garden 2pm</p> <p>Lady 8pm</p> <p>House 8pm</p>
<p>14</p> <p>10AM BACKSTAGE TOUR</p> <p>Garden 1pm</p> <p>Variety 1pm</p> <p>Lady 7pm</p> <p>House 7pm</p>	<p>15</p>	<p>16</p> <p>11AM BACKSTAGE TOUR</p> <p>TUESDAY Q&A</p> <p>FRIENDS REHEARSAL SHERLOCK</p> <p>DRLC REHEARSAL COTTON</p> <p>Lady 2pm</p> <p>Witness 2pm</p> <p>Garden 8pm</p>	<p>17</p> <p>11AM BACKSTAGE TOUR</p> <p>Orphan 11:30am</p> <p>Garden 2pm</p> <p>Variety 2pm</p> <p>Guvnors 8pm</p> <p>Candida 8pm P</p> <p>Cotton 8pm P</p>
<p>21</p> <p>SHAW SYMPOSIUM</p> <p>10AM BACKSTAGE TOUR</p> <p>10:30AM GOSPEL CHOIR</p> <p>Guvnors 1pm</p> <p>Garden 1pm</p> <p>Lady 7pm</p> <p>Witness 7pm</p>	<p>22</p>	<p>23</p> <p>11AM BACKSTAGE TOUR</p> <p>TUESDAY Q&A</p> <p>Lady 2pm</p> <p>Candida 2pm P SM</p> <p>Witness 8pm</p> <p>Kabarett 8pm</p>	<p>24</p> <p>11AM BACKSTAGE TOUR</p> <p>Orphan 11:30am</p> <p>Sherlock 2pm P SM</p> <p>Garden 2pm</p> <p>Cotton 2pm P</p> <p>Lady 8pm</p> <p>Candida 8pm P</p> <p>House 8pm</p> <p>Variety 8pm</p>
<p>28</p> <p>10AM BACKSTAGE TOUR</p> <p>10:30AM COFFEE CONCERT</p> <p>Guvnors 1pm</p> <p>Garden 1pm</p> <p>House 1pm</p> <p>Sherlock 7pm P</p> <p>Witness 7pm</p> <p>Kabarett 7pm</p>	<p>29</p>	<p>30</p> <p>11AM BACKSTAGE TOUR</p> <p>8PM SONGBOOK</p> <p>TUESDAY Q&A</p> <p>Witness 2pm</p> <p>Guvnors 8pm</p> <p>Candida 8pm P</p>	<p>31</p> <p>11AM BACKSTAGE TOUR</p> <p>FRIENDS POST-SHOW CHAT</p> <p>Lady 2pm</p> <p>Candida 2pm SM</p> <p>Sherlock 8pm P</p> <p>Witness 8pm</p> <p>Cotton 8pm</p>

POP-UP PATIO

Great food, refreshments and live music in the Baillie Courtyard.

Thursdays from July 11 through August 29 following matinee performances.



Thursday

Friday

Saturday

<p>4 INDEPENDENCE DAY (US) Orphan 11:30am Garden 2pm Lady 8pm Variety 8pm</p>	<p>5 Lady 2pm House 2pm Witness 8pm Kabarett 8pm</p>	<p>6 11AM BACKSTAGE TOUR GC REHEARSAL CANDIDA 8PM FOOTLIGHTS Orphan 11:30am Garden 2pm Variety 2pm Guvnors 8pm House 8pm</p>
<p>11 5PM POP-UP PATIO Lady 2pm Witness 8pm Kabarett 8pm</p>	<p>12 Orphan 11:30am Garden 2pm Variety 2pm Guvnors 8pm House 8pm</p>	<p>13 11AM BACKSTAGE TOUR Orphan 11:30am Guvnors 2pm Candida 2pm P SM Kabarett 2pm Lady 8pm Witness 8pm Roll 8pm</p>
<p>18 5PM POP-UP PATIO Lady 2pm Candida 2pm P SM Guvnors 8pm House 8pm Kabarett 8pm</p>	<p>19 SHAW SYMPOSIUM Orphan 11:30am Lady 2pm Candida 2pm P SM House 2pm Garden 8pm Variety 8pm</p>	<p>20 SHAW SYMPOSIUM 11AM BACKSTAGE TOUR Orphan 11:30am Witness 2pm Roll 2pm Guvnors 8pm Candida 8pm P Cotton 8pm P</p>
<p>25 4:30PM POP-UP PATIO Orphan 11:30am Guvnors 2pm Candida 2pm P SM Garden 8pm Variety 8pm</p>	<p>26 BERNARD SHAW'S BIRTHDAY Lady 2pm Witness 2pm Roll 2pm Guvnors 8pm Cotton 8pm P</p>	<p>27 11AM BACKSTAGE TOUR 11AM SING-ALONG 8PM SPEAKEASY Orphan 11:30am Lady 2pm Candida 2pm P Sherlock 8pm P Witness 8pm</p>

FESTIVAL THEATRE

My Fair Lady
One Man, Two Guvnors
Sherlock Holmes and the Mystery of the Human Heart

ROYAL GEORGE THEATRE

Witness for the Prosecution
The Secret Garden
The Orphan of Chao
Candida

JACKIE MAXWELL STUDIO THEATRE

The House That Will Not Stand
Snow in Midsummer

SPIEGELTENT

The Shaw Variety Show
The Roll of Shaw
Kabarett
Cotton Club

HOLIDAY SEASON

My Fair Lady
A Christmas Carol

PERFORMANCE CODES

P Preview
SM Special Matinee
O Opening Performance
B Shaw Express Bus



TUESDAY Q&A

Shaw's long-running and ever-popular informal question-and-answer session with actors following Tuesday evening performances (except those marked P and O), in all three theatres. Free

Julia Course backstage (Noël Coward's *Blythe Spirit*)

AUGUST

Sunday

Monday

Tuesday

Wednesday

WHEN IN WINE COUNTRY ...

Niagara is a globally prestigious winemaking region. Take the scenic route, with a pre-or-post-show visit to one of our gorgeous neighbouring wineries. Enjoy local offerings while basking in the ambiance of sweeping vineyard views.

Peller Estates, Trius Winery, or Riverbend Inn & Vineyard are all just a short drive from The Shaw!

Visit mywinecountry.com for menus and reservations.



<p>4</p> <p>SHAW SEMINAR 10AM BACKSTAGE TOUR</p> <p>Guvnors 1pm SM Garden 1pm SM Kabarett 1pm Witness 7pm Cotton 7pm</p>	<p>5</p> <p>CIVIC DAY</p>	<p>6 B</p> <p>11AM BACKSTAGE TOUR TUESDAY Q&A</p> <p>Guvnors 2pm Candida 2pm House 2pm SM Lady 8pm Witness 8pm</p>	<p>7 B</p> <p>11AM BACKSTAGE TOUR</p> <p>Orphan 11:30am Sherlock 2pm P SM Garden 2pm Roll 2pm Guvnors 8pm Candida 8pm Kabarett 8pm</p>
<p>11</p> <p>10AM BACKSTAGE TOUR</p> <p>Sherlock 1pm P SM Garden 1pm Variety 1pm Lady 7pm Candida 7pm Snow 7pm P</p>	<p>12</p>	<p>13 B</p> <p>THE DERBY 11AM BACKSTAGE TOUR TUESDAY Q&A</p> <p>Lady 2pm Candida 2pm Garden 8pm Variety 8pm</p>	<p>14 B</p> <p>THE DERBY 11AM BACKSTAGE TOUR</p> <p>Orphan 11:30am Sherlock 2pm P SM Witness 2pm Cotton 2pm Guvnors 8pm Candida 8pm Snow 8pm P</p>
<p>18</p> <p>10AM BACKSTAGE TOUR</p> <p>Lady 1pm Candida 1pm Snow 1pm 0 Guvnors 7pm Garden 7pm House 7pm</p>	<p>19</p>	<p>20 B</p> <p>11AM BACKSTAGE TOUR TUESDAY Q&A</p> <p>Guvnors 2pm Candida 2pm Witness 8pm Kabarett 8pm</p>	<p>21 B</p> <p>11AM BACKSTAGE TOUR FRIENDS POST-SHOW CHAT</p> <p>Orphan 11:30am Sherlock 2pm Garden 2pm Roll 2pm Lady 8pm Candida 8pm Snow 8pm</p>
<p>25</p> <p>10AM BACKSTAGE TOUR 10:30AM GOSPEL CHOIR</p> <p>Guvnors 1pm Garden 1pm House 1pm Variety 1pm Lady 7pm Witness 7pm Snow 7pm</p>	<p>26</p>	<p>27 B</p> <p>11AM BACKSTAGE TOUR TUESDAY Q&A</p> <p>Lady 2pm Candida 2pm Snow 2pm Sherlock 8pm Witness 8pm Cotton 8pm</p>	<p>28 B</p> <p>11AM BACKSTAGE TOUR FRIENDS POST-SHOW CHAT</p> <p>Orphan 11:30am Sherlock 2pm Garden 2pm Variety 2pm Lady 8pm Witness 8pm</p>

Thursday

Friday

Saturday

<p>1 B</p> <p>SHAW SEMINAR GC REHEARSAL SNOW 4:30PM POP-UP PATIO</p> <p>Orphan 11:30am Sherlock 2pm P SM Garden 2pm Variety 2pm Guvnors 8pm Kabarett 8pm</p>	<p>2 B</p> <p>SHAW SEMINAR 8PM ART OF IDEAS</p> <p>Guvnors 2pm Candida 2pm SM Lady 8pm Witness 8pm</p>	<p>3 B</p> <p>SHAW SEMINAR 11AM BACKSTAGE TOUR 8PM FOOTLIGHTS</p> <p>Orphan 11:30am Lady 2pm SM Candida 2pm SM House 2pm SM Variety 2pm Sherlock 8pm P Garden 8pm</p>
<p>8 B</p> <p>5PM POP-UP PATIO</p> <p>Orphan 11:30am Lady 2pm Witness 2pm Snow 2pm P SM Sherlock 8pm P Garden 8pm Variety 8pm</p>	<p>9 B</p> <p>Orphan 11:30am Lady 2pm Candida 2pm House 2pm Guvnors 8pm Cotton 8pm</p>	<p>10</p> <p>11AM BACKSTAGE TOUR</p> <p>Guvnors 2pm Garden 2pm Snow 2pm P SM Sherlock 8pm P Witness 8pm Kabarett 8pm</p>
<p>15 B</p> <p>THE DERBY 5PM POP-UP PATIO</p> <p>Lady 2pm Candida 2pm Snow 2pm SM Sherlock 8pm Witness 8pm Kabarett 8pm</p>	<p>16 B</p> <p>THE DERBY</p> <p>Orphan 11:30am Guvnors 2pm Garden 2pm House 2pm Variety 2pm Lady 8pm Candida 8pm 0 Snow 8pm</p>	<p>17</p> <p>THE DERBY 11AM BACKSTAGE TOUR</p> <p>Orphan 11:30am Cotton 11:30am House 12pm SM Garden 2pm Sherlock 5pm 0 Witness 8pm</p>
<p>22 B</p> <p>5PM POP-UP PATIO</p> <p>Orphan 11:30am Lady 2pm Witness 2pm Snow 2pm SM Guvnors 8pm Garden 8pm Cotton 8pm</p>	<p>23 B</p> <p>8PM SONGBOOK</p> <p>Lady 2pm Candida 2pm Snow 2pm Sherlock 8pm Witness 8pm</p>	<p>24</p> <p>11AM BACKSTAGE TOUR 8PM FOOTLIGHTS</p> <p>Orphan 11:30am Sherlock 2pm Garden 2pm Kabarett 2pm Guvnors 8pm Candida 8pm House 8pm</p>
<p>29 B</p> <p>4:30PM POP-UP PATIO</p> <p>Guvnors 2pm Candida 2pm House 2pm Sherlock 8pm Garden 8pm Kabarett 8pm</p>	<p>30</p> <p>5PM ART OF IDEAS</p> <p>Orphan 11:30am Sherlock 2pm SM Garden 2pm SM Guvnors 8pm Snow 8pm</p>	<p>31 B</p> <p>11AM BACKSTAGE TOUR 8PM SPEAKEASY</p> <p>Orphan 11:30am Lady 2pm SM Witness 2pm SM Snow 2pm SM Guvnors 8pm Candida 8pm House 8pm</p>

FESTIVAL THEATRE

My Fair Lady
One Man, Two Guvnors
Sherlock Holmes
and the Mystery of
the Human Heart

ROYAL GEORGE THEATRE

Witness for the
Prosecution
The Secret Garden
The Orphan of Chao
Candida

JACKIE MAXWELL STUDIO THEATRE

The House That Will
Not Stand
Snow in Midsummer

SPIEGELTENT

The Shaw Variety Show
The Roll of Shaw
Kabarett
Cotton Club

HOLIDAY SEASON

My Fair Lady
A Christmas Carol

PERFORMANCE CODES

P Preview
SM Special Matinee
0 Opening Performance
B Shaw Express Bus

POP-UP PATIO

Great food, refreshments
and live music in the
Baillie Courtyard.



Thursdays in July
& August following
matinee performances

SEPTEMBER

Sunday	Monday	Tuesday	Wednesday
<p>1</p> <p>10AM BACKSTAGE TOUR</p> <p>Guvnors 1pm SM</p> <p>Garden 1pm SM</p> <p>House 1pm SM</p> <p>Sherlock 7pm</p> <p>Witness 7pm</p> <p>Cotton 7pm</p>	<p>2</p> <p>LABOUR DAY</p>	<p>3</p> <p>11AM BACKSTAGE TOUR</p>	<p>4</p> <p>11AM BACKSTAGE TOUR</p> <p>FRIENDS POST-SHOW CHAT</p> <p>Guvnors 2pm</p> <p>Candida 2pm SM</p> <p>House 2pm SM</p> <p>Lady 8pm</p> <p>Witness 8pm</p> <p>Snow 8pm</p>
<p>8</p> <p>10AM BACKSTAGE TOUR</p> <p>Sherlock 1pm SM</p> <p>Garden 1pm</p> <p>Kabarett 1pm</p> <p>Lady 7pm</p> <p>Witness 7pm</p> <p>Snow 7pm</p>	<p>9</p>	<p>10</p> <p>11AM BACKSTAGE TOUR</p> <p>TUESDAY Q&A</p> <p>Sherlock 2pm SM</p> <p>Witness 2pm SM</p> <p>Cotton 2pm</p> <p>Guvnors 8pm</p> <p>Snow 8pm</p>	<p>11</p> <p>11AM BACKSTAGE TOUR</p> <p>8PM SONGBOOK</p> <p>FRIENDS POST-SHOW CHAT</p> <p>Orphan 11:30am</p> <p>Lady 2pm SM</p> <p>Witness 2pm</p> <p>Snow 2pm SM</p> <p>Sherlock 8pm</p> <p>Garden 8pm</p>
<p>15</p> <p>10AM BACKSTAGE TOUR</p> <p>Sherlock 1pm SM</p> <p>Garden 1pm SM</p> <p>Cotton 1pm</p> <p>Guvnors 7pm</p> <p>Candida 7pm</p> <p>Variety 7pm</p>	<p>16</p>	<p>17</p> <p>11AM BACKSTAGE TOUR</p> <p>TUESDAY Q&A</p> <p>Lady 2pm SM</p> <p>Candida 2pm SM</p> <p>Snow 2pm SM</p> <p>Sherlock 8pm</p> <p>Witness 8pm</p> <p>Kabarett 8pm</p>	<p>18</p> <p>11AM BACKSTAGE TOUR</p> <p>FRIENDS POST-SHOW CHAT</p> <p>Orphan 11:30am</p> <p>Sherlock 2pm SM</p> <p>Garden 2pm</p> <p>Variety 2pm</p> <p>Guvnors 8pm</p> <p>Candida 8pm</p> <p>House 8pm</p>
<p>22</p> <p>10AM BACKSTAGE TOUR</p> <p>10:30AM GOSPEL CHOIR</p> <p>Sherlock 1pm SM</p> <p>Garden 1pm SM</p> <p>Kabarett 1pm</p> <p>Lady 7pm</p> <p>Candida 7pm</p> <p>House 7pm</p>	<p>23</p>	<p>24</p> <p>11AM BACKSTAGE TOUR</p> <p>TUESDAY Q&A</p> <p>Guvnors 2pm</p> <p>Candida 2pm SM</p> <p>House 2pm SM</p> <p>Lady 8pm</p> <p>Witness 8pm</p> <p>Snow 8pm</p>	<p>25</p> <p>FALL PLAY BY PLAY</p> <p>11AM BACKSTAGE TOUR</p> <p>FRIENDS POST-SHOW CHAT</p> <p>Orphan 11:30am</p> <p>Lady 2pm SM</p> <p>Candida 2pm</p> <p>Snow 2pm SM</p> <p>Sherlock 8pm</p> <p>Witness 8pm</p> <p>Cotton 8pm</p>
<p>29</p> <p>10:30AM COFFEE CONCERT</p> <p>11AM BACKSTAGE TOUR</p> <p>Lady 1pm SM</p> <p>Candida 1pm SM</p> <p>House 1pm SM</p> <p>Sherlock 7pm</p> <p>Witness 7pm</p> <p>Kabarett 7pm</p>	<p>30</p> <p>NATIONAL DAY FOR TRUTH AND RECONCILIATION</p>		

Thursday

Friday

Saturday

<p>5 B</p> <p>Orphan 11:30am House 2pm SM Sherlock 2pm SM Variety 2pm Candida 8pm Guvnors 8pm Cotton 8pm</p>	<p>6 B</p> <p>Orphan 11:30am Sherlock 2pm SM Garden 2pm SM Cotton 2pm Lady 8pm Witness 8pm Snow 8pm</p>	<p>7 B</p> <p>11AM BACKSTAGE TOUR</p> <p>Orphan 11:30am Guvnors 2pm Candida 2pm SM House 2pm SM Roll 2pm Sherlock 8pm Garden 8pm Variety 8pm</p>
<p>12 B</p> <p>Sherlock 2pm SM Garden 2pm SM Roll 2pm Guvnors 8pm Candida 8pm House 8pm</p>	<p>13 B</p> <p>Orphan 11:30am Lady 2pm SM Candida 2pm SM House 2pm SM Sherlock 8pm Witness 8pm Kabarett 8pm</p>	<p>14 B</p> <p>11AM BACKSTAGE TOUR</p> <p>Orphan 11:30am Guvnors 2pm SM Garden 2pm House 2pm SM Variety 2pm Lady 8pm Witness 8pm Snow 8pm</p>
<p>19 B</p> <p>Orphan 11:30am Guvnors 2pm Garden 2pm SM House 2pm SM Cotton 2pm Lady 8pm Candida 8pm Snow 8pm</p>	<p>20 B</p> <p>Lady 8pm Witness 8pm Snow 8pm</p>	<p>21 B</p> <p>GC WEEKEND DIRECTORS PROJECT 11AM BACKSTAGE TOUR 2PM FOOTLIGHTS 8PM SPEAKEASY</p> <p>Orphan 11:30am Guvnors 2pm SM Garden 2pm Snow 2pm SM Sherlock 8pm Witness 8pm</p>
<p>26 B</p> <p>FALL PLAY BY PLAY</p> <p>Garden 11am Sherlock 2pm Variety 2pm Guvnors 8pm Candida 8pm Snow 8pm</p>	<p>27 B</p> <p>FALL PLAY BY PLAY 8PM FOOTLIGHTS</p> <p>Orphan 11:30am Guvnors 2pm SM House 2pm SM Sherlock 8pm Garden 8pm SM</p>	<p>28 B</p> <p>11AM ART OF IDEAS 11AM BACKSTAGE TOUR</p> <p>Orphan 11:30am Guvnors 2pm Garden 2pm SM Snow 2pm SM Cotton 2pm Lady 8pm Witness 8pm Roll 8pm F</p>

FESTIVAL THEATRE

My Fair Lady
One Man, Two Guvnors
Sherlock Holmes
and the Mystery of
the Human Heart

ROYAL GEORGE THEATRE

Witness for the
Prosecution
The Secret Garden
The Orphan of Chao
Candida

JACKIE MAXWELL STUDIO THEATRE

The House That Will
Not Stand
Snow in Midsummer

SPIEGELTENT

The Shaw Variety Show
The Roll of Shaw
Kabarett
Cotton Club

HOLIDAY SEASON

My Fair Lady
A Christmas Carol

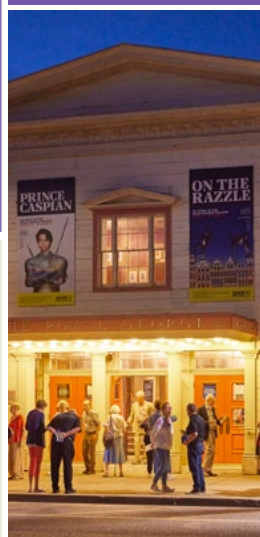
PERFORMANCE CODES

SM Special Matinee
F Final Performance
B Shaw Express Bus

INCLUDE THE SHAW IN YOUR HOLIDAY SEASON PLANS!

A Christmas Carol &
Lerner and Loewe's *My Fair Lady*

Onstage November and December!



OCTOBER

Sunday

Monday

Tuesday

Wednesday

		<p>1 B</p> <p>11AM BACKSTAGE TOUR TUESDAY Q&A</p> <p>Lady 2pm SM Witness 2pm Snow 2pm SM Sherlock 8pm Garden 8pm Variety 8pm</p>	<p>2 B</p> <p>11AM BACKSTAGE TOUR FRIENDS POST-SHOW CHAT</p> <p>Orphan 11:30am Lady 2pm SM Candida 2pm House 2pm SM Sherlock 8pm Witness 8pm Kabarett 8pm</p>
<p>6</p> <p>10AM BACKSTAGE TOUR</p> <p>Sherlock 1pm Witness 1pm Cotton 1pm Guvnors 7pm Candida 7pm Variety 7pm F</p>	<p>7</p>	<p>8 B</p> <p>11AM BACKSTAGE TOUR TUESDAY Q&A</p> <p>Lady 2pm SM Candida 2pm SM House 2pm Sherlock 8pm Witness 8pm</p>	<p>9 B</p> <p>FRIENDS POST-SHOW CHAT</p> <p>Garden 11am Sherlock 2pm SM Kabarett 2pm Guvnors 8pm Candida 8pm House 8pm</p>
<p>13</p> <p>10AM BACKSTAGE TOUR</p> <p>Guvnors 1pm F SM Garden 1pm F SM Sherlock 7pm F Witness 7pm F</p>	<p>14</p> <p>THANKSGIVING DAY</p>	<p>15</p>	<p>16</p>
<p>20</p> <p>10AM BACKSTAGE TOUR</p> <p>Lady 1pm SM</p>	<p>21</p>	<p>22</p> <p>Lady 1pm SM</p>	<p>23 B</p> <p>Lady 1pm SM</p>
<p>27</p> <p>10AM BACKSTAGE TOUR</p> <p>Lady 1pm SM</p>	<p>28</p>	<p>29 B</p> <p>Lady 1pm SM</p>	<p>30</p> <p>Lady 1pm SM</p>

LERNER AND LOEWE'S MY FAIR LADY

A perfect way to spend time in beautiful Niagara-on-the-Lake during the holiday season!

On stage at the Festival Theatre until December 22



Thursday

Friday

Saturday

<p>3 B</p> <p>Garden 11am Sherlock 2pm SM Variety 2pm Guvnors 8pm Candida 8pm Cotton 8pm</p>	<p>4 B</p> <p>Orphan 11:30am Guvnors 2pm SM Garden 2pm House 2pm SM Lady 8pm Witness 8pm Snow 8pm</p>	<p>5</p> <p>SAIL WORKSHOP 11AM BACKSTAGE TOUR 8PM FOOTLIGHTS</p> <p>Orphan 11:30am F Lady 2pm SM Witness 2pm Snow 2pm F SM Sherlock 8pm Garden 8pm</p>
<p>10</p> <p>Lady 2pm SM Witness 2pm SM Sherlock 8pm Garden 8pm Cotton 8pm</p>	<p>11 B</p> <p>Sherlock 2pm SM Witness 2pm Cotton 2pm F Lady 8pm Candida 8pm F</p>	<p>12 B</p> <p>11AM BACKSTAGE TOUR</p> <p>Guvnors 2pm Garden 2pm House 2pm F SM Kabarett 2pm F Lady 8pm Witness 8pm</p>
<p>17</p> <p>Lady 7pm</p>	<p>18 B</p> <p>Lady 1pm SM</p>	<p>19</p> <p>10AM BACKSTAGE TOUR</p> <p>Lady 1pm SM Lady 7pm</p>
<p>24</p> <p>Lady 1pm SM Lady 7pm</p>	<p>25 B</p> <p>Lady 1pm SM</p>	<p>26</p> <p>10AM BACKSTAGE TOUR</p> <p>Lady 1pm SM Lady 7pm</p>
<p>31 B</p> <p>Lady 1pm SM</p>		

FESTIVAL THEATRE

My Fair Lady
 One Man, Two Guvnors
 Sherlock Holmes and the Mystery of the Human Heart

ROYAL GEORGE THEATRE

Witness for the Prosecution
 The Secret Garden
 The Orphan of Chao
 Candida

JACKIE MAXWELL STUDIO THEATRE

The House That Will Not Stand
 Snow in Midsummer

SPIEGELTENT

The Shaw Variety Show
 The Roll of Shaw
 Kabarett
 Cotton Club

HOLIDAY SEASON

My Fair Lady
 A Christmas Carol

PERFORMANCE CODES

SM Special Matinee
 F Final Performance
 B Shaw Express Bus

A CHRISTMAS CAROL

Scrooge and the ghosts are back!

On stage at the Royal George Theatre from Nov 8 – Dec 22



Graeme Somerville (A Christmas Carol, 2021). Photo by David Cooper.

NOVEMBER

Sunday	Monday	Tuesday	Wednesday
3 <small>10AM BACKSTAGE TOUR</small> Lady 1pm SM	4	5	6 B Lady 1pm SM
10 <small>10AM BACKSTAGE TOUR</small> Lady 1pm SM Christmas 1pm P SM	11	12 B Lady 1pm Christmas 1pm P SM	13 B Lady 1pm SM Christmas 1pm P SM
17 <small>10AM BACKSTAGE TOUR</small> Lady 1pm SM Christmas 1pm SM	18	19 B Lady 1pm SM Christmas 1pm SM	20 Christmas 11am Lady 1pm SM
24 <small>10AM BACKSTAGE TOUR</small> Lady 1pm SM Christmas 1pm SM	25	26	27 Lady 1pm SM Christmas 1pm Christmas 7pm

DECEMBER

Sunday	Monday	Tuesday	Wednesday
1 <small>10AM BACKSTAGE TOUR</small> Lady 1pm SM Christmas 1pm	2	3 B Lady 1pm SM Christmas 1pm	4 Christmas 11am R Lady 1pm SM Christmas 7pm
8 <small>10AM BACKSTAGE TOUR</small> Lady 1pm SM Christmas 1pm SM	9	10 B Lady 1pm SM Christmas 1pm	11 Lady 1pm SM Christmas 1pm Christmas 7pm
15 <small>10AM BACKSTAGE TOUR</small> Lady 1pm SM Christmas 1pm	16	17 Lady 1pm SM Christmas 1pm	18 B Lady 1pm SM Christmas 1pm
22 <small>10AM BACKSTAGE TOUR</small> Lady 1pm F SM Christmas 1pm F	23	24	25 <small>CHRISTMAS</small>

Thursday

Friday

Saturday

	1 Lady 1pm SM	2 10AM BACKSTAGE TOUR Lady 1pm SM Lady 7pm
7 Lady 1pm SM Lady 7pm	8 Lady 1pm SM Christmas 1pm P SM	9 10AM BACKSTAGE TOUR Lady 1pm SM Christmas 1pm P SM Lady 7pm Christmas 7pm P
14 Christmas 11am Lady 1pm SM Lady 7pm	15 Lady 1pm SM Christmas 1pm SM	16 10AM BACKSTAGE TOUR Lady 1pm SM Christmas 1pm SM Lady 7pm Christmas 7pm 0
21 Lady 1pm Christmas 1pm SM Lady 7pm	22 TEACHER'S DAY Lady 1pm SM Christmas 1pm SM	23 10AM BACKSTAGE TOUR Lady 1pm SM Christmas 1pm Lady 7pm Christmas 7pm
28 THANKSGIVING (US) Christmas 11am Lady 1pm SM Lady 7pm	29 Lady 1pm SM Christmas 1pm	30 10AM BACKSTAGE TOUR Lady 1pm SM Christmas 1pm Lady 7pm Christmas 7pm

HOLIDAY SEASON

My Fair Lady
A Christmas Carol

PERFORMANCE CODES

P Preview
SM Special Matinee
R Relaxed
0 Opening Performance
F Final Performance
B Shaw Express Bus

GIVE THE GIFT OF THEATRE



Get on the good list!

A Shaw gift certificate or gift membership makes a pretty nice gift.

Thursday

Friday

Saturday

5 Lady 1pm SM Christmas 1pm SM Lady 7pm	6 Lady 1pm SM Christmas 1pm	7 10AM BACKSTAGE TOUR Lady 1pm SM Christmas 1pm Lady 7pm Christmas 7pm
12 Lady 1pm SM Christmas 1pm Lady 7pm	13 Lady 1pm SM Christmas 1pm	14 10AM BACKSTAGE TOUR Lady 1pm SM Christmas 1pm Lady 7pm Christmas 7pm
19 Lady 1pm SM Christmas 1pm Lady 7pm	20 Lady 1pm SM Christmas 1pm Christmas 7pm	21 10AM BACKSTAGE TOUR Lady 1pm SM Christmas 1pm Lady 7pm Christmas 7pm
26	27	28

THE SHAW EXPRESS

Servicing Toronto and Burlington during the holiday season. Hop on!



“AT FIRST PEOPLE REFUSE TO BELIEVE THAT A STRANGE NEW THING CAN BE DONE, THEN THEY BEGIN TO HOPE IT CAN’T BE DONE, THEN THEY SEE IT CAN BE DONE — THEN IT IS DONE AND ALL THE WORLD WONDERS WHY IT WAS NOT DONE CENTURIES AGO.”

— FRANCES HODGSON BURNETT, *THE SECRET GARDEN*

The non-profit, or charitable theatre movement is new. It came about in the mid-20th century as a response to a growing divide in access to great art, but it was created in the days when television was new, and the digital age had barely begun. Live activities were the default. A far cry from the current moment.

When TC and I talk about the future of live art, we often look ahead and think “What will the theatre of the 21st century be like?” and “How will it be different than the last 100 years?” Or last thousand?

We think the plays, which always respond to their times, will evolve and shift - for they always have - but the basic human needs served by gathering, by human connection bolstered through shared story, and the empathy created must, at heart, continue.

Our duty to this need, as a leading cultural charity, is to try and be the place where art and those basic needs served through art and gathering continue, despite all outside forces. A retreat for conversation and debate. The Shaw should be a place where everyone feels welcome and where all people can come to reconnect with themselves and meet with others of, if not a like mind, at least a like spirit.

We believe that such live conversations, arguments and respectful disagreements are the way in which our civilization builds and endures and are proud of the role art can play in provoking and embracing that dialogue. We envision a future here for our patrons to explore these provocations together even more deeply, through our art.

TC’s 2024 Season offers work that will entertain, provoke and engage everyone. It is a buffet that showcases a range of new voices twinned with beloved stories and proves the continuing strength of the repertory ensemble model we are famous for.

As one of the very few remaining repertory companies left in the world, ticket sales cover less than half of our expenses, and costs continue to rise rapidly. We are more reliant than ever on your philanthropic investment. Whether you are one of our cherished long-time donors, corporate partners, granting bodies or recent Friends, we invite you to consider increasing your support if you can. Every dollar invested with us allows us to ensure access to art and dialogue for more people, young and old.

So many continue to be impacted by these extraordinary times, it is up to those of us who can help to do what we can to support those things we care about and that are fundamental to civilization. We are proud to be one of those things for so many of you!

Thank you again and we look forward to seeing you very soon!



A handwritten signature in white ink, consisting of stylized, flowing letters that appear to read 'TJ'.

**TIM JENNINGS
EXECUTIVE DIRECTOR**

THANK YOU!

**FOR YOU, OUR GENEROUS AND LOYAL SUPPORTERS,
WE OFFER A SERIES OF SPECIAL BENEFITS
THROUGHOUT THE SEASON, BY LEVEL OF MEMBERSHIP.**

GOVERNORS COUNCIL



As a Governors Council member, you have an even deeper connection to our work. Your benefits give you:

- First access to tickets during our early ordering period
- Complimentary parking in the Festival lot with your GC Membership Card*
- Invitation to the Governors Council Lounge during Festival Theatre intermissions
- Access to reserved Platinum and Gold seats for late-notice purchases*
- Opportunity to attend select Opening Celebrations

To book, call the Governors Council office at 1-800-657-1106 ext 2208

GOVERNORS COUNCIL REHEARSALS

ONSTAGE REHEARSALS

Experience part of a technical rehearsal in the theatre as sound, lighting and special effects are added into the production. Choose from one of the following; Founders Circle and above (\$10,000+) can experience all three! **Free**

- *One Man, Two Guvnors*, Thursday May 30
- *Candida*, Saturday July 6
- *Snow in Midsummer*, Thursday August 1

EARLY REHEARSALS

Special invitation to select rehearsals very early in the process, right in the rehearsal hall! May include presentations from the director, designer and cast. For Benefactor level and above (\$6000+). **Free**

GOVERNORS COUNCIL WEEKEND

SEPTEMBER 21 & 22

Enjoy a weekend of curated sessions, events and experiences to bring you closer to our art, including the Directors Project, discussions with intern directors and dinner with Company members. **\$285**

NEIL MUNRO INTERN DIRECTORS PROJECT

SEPTEMBER 21

Experience short plays directed by our intern directors. Book early; space is limited. **Free**

OPENING CELEBRATIONS

- *My Fair Lady* May 25
- *Witness for the Prosecution* May 26
- *The House That Will Not Stand* June 21
- *The Orphan of Chao* June 22
- *One Man, Two Guvnors* June 22
- *The Secret Garden* June 23
- *Candida* August 16
- *Sherlock Holmes and the Mystery of the Human Heart* August 17
- *Snow in Midsummer* August 18

SAVE THE DATE!

Annual General Meeting, March 8

FUNDRAISING EVENTS

- Shivaree, April 13, Niagara-on-the-Lake
- Shaw Boxing, April 25, Toronto

*Subject to availability



SPECIAL EVENTS TO DEEPEN YOUR CONNECTION WITH ALL THINGS SHAW!

A complete calendar of events can be found at shawfest.com

To book events, call 1-800-511-7429.

Governors Council and Premier level (\$1000+) can call 1-800-657-1106 ext 2208.

Alexandra Gratten backstage (On the Rezzle)

Our Friends mean the world to us. You make it possible for us to continue growing and strengthening the things that make this Festival special. Benefits of a Shaw Membership include:

- Advance ticket ordering before the general public
- Free ticket exchange on purchases made during the early ordering period
- Invitation to the private Members Terrace during Festival Theatre intermissions
- Friends-only quarterly eNewsletter and subscription to Shaw Magazine
- Advance notice of special behind-the-scenes experiences*

ONLINE HAPPY HOUR

SELECT THURSDAYS, 5PM

Pour yourself a drink and join us online for an engaging conversation (and a few stories!) with Shaw Company members and artists. Invitation and information emailed prior to each event. **Free**

FRIENDS ONSTAGE REHEARSALS

Experience part of a technical rehearsal in the theatre as sound, lighting and special effects are added into the production. For Sustaining level and above (\$600+) and Corporate Partners. **Free**

- *My Fair Lady*, Friday April 26
- *Sherlock Holmes and the Mystery of the Human Heart*, Tuesday July 16

POST-SHOW CHAT

Wednesdays after select Festival Theatre matinees, except those marked P and O. See calendar for dates. For all Friends, Corporate Partners and Governors Council members. **Free**

U.S. PATRON APPRECIATION EVENTS

Mix & Mingle events for Shaw Friends and Governors Council members in our largest U.S. markets, such as Buffalo, Cleveland, Pittsburgh and Rochester. Don't miss this chance to connect with fellow theatre lovers and members of the Shaw Ensemble. Invitations sent by email.



The Doherty-Rand
Legacy Circle

Celebrating our binational founders, Brian Doherty of Niagara-on-the-Lake and Calvin Rand of Buffalo, the Legacy Circle recognizes generous individuals committing to future Shaw Festival support through bequests, insurance gifts, trusts and other legacy gifts.

DRLC members can attend a special onstage rehearsal:

- *The Secret Garden*, Thursday May 23
- *Cotton Club*, Tuesday July 16

To book, or for more information, contact Kim White at 289-783-1924 or kwhite@shawfest.com

*Subject to availability

DON'T MISS OUT!

Most of our special behind-the-scenes invitations are sent by email, so make sure you are signed up to receive emails from us. Log on to your shawfest.com account or call 1-800-657-1106 ext 2556 to update your communication preferences.



Schedules and details online at shawfest.com/beyondthestage
To book Beyond the Stage events, call the Box Office at 1-800-511-7429

Shakell Rollock and Madelyn Kriese (A Grand Night for Singing)

CELEBRATORY EVENTS

MOTHER'S DAY TEA

MAY 12

Indulge in an elegant elevenes tea on Mother's Day, in the fabulous Spiegeltent. Add on a workshop to make a fancy fascinator to wear during tea and take in Lerner and Loewe's *My Fair Lady* together! Tea \$85 + Workshop \$10. Show ticket extra.

FATHER'S DAY PLOUGHMAN'S LUNCH

JUNE 16

Celebrate Dad with a pint and a hearty ploughman's lunch on Father's Day, in the spectacular Spiegeltent. Add on a workshop to make a boutonniere to wear during lunch, and enjoy *One Man, Two Guvnors* as a family. Ploughman's Lunch \$85 + Workshop \$10. Show ticket extra.



Allan Louis backstage (Gypsy)



IMMERSE YOURSELF

Cost does not include theatre tickets.

SPRING & FALL PLAY BY PLAY

JUNE 5-7 & SEPTEMBER 25-27

Deepen your theatre engagement with Shaw artists and the creative minds who bring our plays to life. Five plays over three days, including daily lunches, presentations, and parking. **\$250**

SHAW SYMPOSIUM

JULY 19-21

Revel in the works of Bernard Shaw and contemporaries with thought-provoking scholarly presentations and sessions with Shaw creatives. Includes reception, picnic lunch and parking. **Free to all ISS members, \$175 for non-members, \$100 for students. Online offerings available.**

SHAW SEMINAR

AUGUST 1-4

Four days, seven plays and engaging sessions with Shaw professionals, writers, and scholars. Includes two lunches, Cabernet Cabaret, guest speakers and parking. **\$400**



THE ART OF IDEAS

CHALLENGE YOUR BELIEFS. ENGAGE WITH OUR ART.

In 2024 the Art of Ideas umbrella expands, with three special events, and the traditional speaker series featuring fascinating academics and artists and the ideas and themes of the 2024 Season.

CONVERSATIONS

APRIL 17 AND 24

Two evenings of conversation exploring the 2024 Season plays *The Orphan of Chao* and *Snow in Midsummer* with NAC Artistic Director, English Theatre, Nina Lee Aquino, Shaw Embedded Artist and Playwright Michael Man and others. Online only. \$10

ART & NATURE

JUNE 6

Join Shaw designer Judith Bowden and Arctic researcher and conservationist, Dr Peter Ewins as they show the inspiration that art takes from nature, speak about *The Secret Garden*, and address the pressing need to conserve our environment. \$35

REIMAGINING CLASSICS

JULY 7

Join director Philip Akin and University of Toronto Professor of Dramatic Arts, Dr Lawrence Switzky as they explore the plays in our 2024 Season. Thought-provoking analysis of *The House That Will Not Stand* and others. \$35



Travis Seetoo (*The Game of Love and Chance*)

BALDWIN VS. BUCKLEY – A PLAY PRESENTATION

AUGUST 2

On the 100th anniversary of the birth of James Baldwin, The Shaw re-enacts the historic 1965 debate between James Baldwin and William F. Buckley on race and the American Dream. A no-holds-barred verbal boxing match of radical thinkers of mid-20th century America. The subject being "The American Dream is at the cost of the American Negro". \$100

DINNER, “HOW TO WATCH A PLAY” AND THEN ... A PLAY

AUGUST 30

Indulge in an exclusive evening with delicious delights: cuisine featuring the best the Niagara wine region has to offer; Artistic Director Tim Carroll shares his witty insights about “How to Watch a Play”; wit and laughter in *One Man, Two Guvnors*. Includes parking, aperitif, dinner, talk. Ticket extra. \$300

ART AND MEDICINE

SEPTEMBER 28

Join President of the Ontario College of Surgeons, Dr Glen Bandiera, Shaw Festival Movement Director Alexis Milligan, Cardiologist Dr Penelope Rampersad and Artistic Director Tim Carroll in this panel discussion at McMaster University about the inextricable connection between art, artists and medicine. \$60, \$25 students

MEET THE COMPANY

MEET SHAW DIRECTORS AND DESIGNERS

Up close and personal with some of our 2024 directors and designers who share their eye-opening insights and visions about the plays they have brought to life. In-person and online. Dates to come. **\$15, \$5 for Students**

CONTINUE THE CONVERSATION

Exploring unique perspectives on a shared experience. Engaging facilitated discussions about the plays. Offered in all theatres after select performances, and after all lunchtime shows (except those marked P and O.) **Free**

PRE-SHOW TALKS

Led by our intern directors enjoy an introduction to that evening's play. For select Festival Theatre performances (except those marked P and O). **Free**

TUESDAY Q & A

Shaw's long-running and ever-popular informal question-and-answer session with actors following Tuesday evening performances (except those marked P and O), in all three theatres. **Free**

BACKSTAGE TOURS

MAY – DECEMBER

Visit shawfest.com for dates and times

Here's your chance to peek behind the stage curtain. An hour-long guided tour of the Festival Theatre reveals the secrets that bring The Shaw's work to the stage. **\$10. \$5 with a ticket to a performance.**



MUSICAL DELIGHTS

MY FAIR LADY SING-ALONG

JULY 27

Join Shaw Music Director, Paul Sportelli, and sing along to *My Fair Lady*! "I Could Have Danced All Night!", "Get Me to the Church on Time", "On the Street Where You Live", and all the other classics that make this musical so timeless. **\$10 with a ticket to *My Fair Lady*. \$20 for those who just wish to sing!**



Kyle Golemba (A Grand Night for Singing)



GARDENS AND NATURE – *The Secret Garden* pre-show workshop

Enlightening, interactive workshops for youth prior to each performance of *The Secret Garden*. What can gardens teach us about nature and the environment? Dig into them! Fun for all ages. **\$5 with a ticket to *The Secret Garden*.**

THE FURLONG – Weekend Spring Intensive for Youth

MAY 4-5

A weekend immersion into theatre at the Shaw Festival. Acting, movement, improv, singing and more. The intensive allows participants to attend a working rehearsal of a show in the 2024 Season, prior to its Opening, and a ticket to see *My Fair Lady*. Ages 13-18. **\$150**

MINI MANNERS – Workshop and Children’s Tea

JUNE 8

How do you do tea? Join members of the Shaw Ensemble as they guide children through the age-old pastime of “taking tea”. Favourite stuffed animals are most welcome. The essential cookies and punch are provided. Ages 5-10. **\$10 with a ticket to *The Secret Garden*. \$20 without ticket.**

THE DERBY – Weeklong Summer Intensive for Youth

AUGUST 13-17

A full week of monologue and text study, movement, choreography, singing, and coaching on how to be “Audition Ready” plus an invitation and ticket to attend the Opening performance of *Sherlock Holmes and the Mystery of the Human Heart*. Ages 13-18. **\$350**

SAIL – Shaw Arts Inspiring Leadership

OCTOBER 5

A full-day program which uses the arts to foster the traits and skills that are crucial to being a good leader. Immersive workshops will focus on presentation and public speaking skills and the importance of courage, resiliency, respect and empathy. Plus enjoy a performance of *Sherlock Holmes and the Mystery of the Human Heart*. Ages 13-16. **\$250**

**Transportation for select Beyond the Stage
for Youth events provided by Niagara Airbus**

YOU DESERVE A ROUND OF APPLAUSE!

Our sincerest thanks to you for supporting the Shaw Festival in all of the various ways: as ticket buyers, Friends, Governors Council members, Foundation and Government supporters and Corporate Partners.

MAJOR SUPPORTERS

Marilyn & Charles Baillie



Tim & Frances Price



THEATRE, PRODUCTION AND PROGRAM SPONSORS



James F. Brown



Wendy & Bruce Gitelman

William & Nona
Macdonald Heaslip
Foundation

Mary E. Hill



Humeniuk Foundation



Christopher &
Jeanne Jennings

James & Diane King



Gabriel Pascal
Memorial Fund



Corinne & Victor Rice

Scotiabank®



MEDIA AND PRODUCT SPONSORS



PELLER  ESTATES



GOVERNMENT SUPPORT



SHAW SEASON PLANNER

Use this form to plan your 2024 Season visit to The Shaw. The 2024 Season performance calendar is available online at shawfest.com/2024calendar

1 SELECT YOUR PLAY(S)

		SHOW	DATE	TIME	# TICKETS
Pay full price	1				
	2				
Save 15% on all	3				
	4				
Save 20%	5				
	6				
	7				
Save 25%	8				
	9				

2 ADD HOLIDAY SEASON PLAYS

		SHOW	DATE	TIME	# TICKETS
1					
2					

3 PLAN YOUR SPIEGELTENT AND BEYOND THE STAGE EVENTS

		EVENT	DATE	TIME
1				
2				
3				
4				
5				

4 PLACE YOUR ORDER AT SHAWFEST.COM OR 1-800-511-7429 OR BRING THIS PLANNER TO THE FESTIVAL THEATRE.

Always a *showstopper.*



Discover how we wow guests at our three showstopping
hotels in the heart of Wine Country.

Delicious Dining | Wine Trolley Tours | Spas & Pools | Unique Hot Springs
Gorgeous Guestrooms | Outstanding Service | Lounges & Live Entertainment
Traditional Tea Room | Shuttle Service

BOOK YOUR FESTIVAL GETAWAY TODAY!

Prince^{OF}Wales

QUEEN'S LANDING

PILLAR^{AND}POST

www.vintage-hotels.com | 1.888.669.5566 | Niagara-on-the-Lake, Ontario, Canada

124 | Q | HOTEL & SPA

CULINARY ARTISTRY, WORLD-CLASS SPA
& LUXURIOUS ACCOMMODATIONS

LOCATED STEPS FROM THE ROYAL GEORGE THEATRE

We are a brand-new resort featuring: luxurious guestrooms, 2 gourmet restaurants, a destination spa with a 12 thousand square foot hydrotherapy circuit, Starbucks, and several venues to host parties and weddings. As the official sponsor of the Royal George, we strongly believe in supporting local and the arts. We invite you to experience the New Niagara.



NOT!
BAR > RESTAURANT

124QUEEN.COM
124 QUEEN STREET,
NIAGARA-ON-THE-LAKE,
ONTARIO
1.855.988.4552



t
treadwell
farm to table cuisine

FESTIVAL THEATRE

**LERNER AND LOEWE'S
MY FAIR LADY**

Book and Lyrics by Alan Jay Lerner
Music by Frederick Loewe
Adapted from Bernard Shaw's Play and
Gabriel Pascal's Motion Picture *Pygmalion*

ONE MAN, TWO GUVNORS

By Richard Bean
Based on *The Servant of Two Masters* by Carlo Goldoni
With songs by Grant Olding

**SHERLOCK HOLMES AND
THE MYSTERY OF THE
HUMAN HEART**

By Reginald Candy
Based on characters by Sir Arthur Conan Doyle

ROYAL GEORGE THEATRE

**WITNESS FOR
THE PROSECUTION**

By Agatha Christie

THE SECRET GARDEN

A Play with Songs
Based on the novel by Frances Hodgson Burnett
Adapted for the stage by Jay Turvey and Paul Sportelli

**THE ORPHAN OF CHAO
(LUNCHTIME ONE-ACT)**

Adapted by Michael Man
Based on the classical Chinese drama,
The Great Revenge of the Zhao Orphan
By Ji Junxiang

CANDIDA

By Bernard Shaw

JACKIE MAXWELL STUDIO THEATRE

**THE HOUSE THAT
WILL NOT STAND**

By Marcus Gardley

SNOW IN MIDSUMMER

By Frances Ya-Chu Cowhig
Based on the classical Chinese drama,
The Injustice of Dou E That Moved Heaven and Earth
By Guan Hanqing

SPIEGELTENT

THE SHAW VARIETY SHOW

THE ROLL OF SHAW

KABARETT

COTTON CLUB

HOLIDAY SEASON

A CHRISTMAS CAROL

By Charles Dickens
Adapted and originally directed by Tim Carroll

**LERNER AND LOEWE'S
MY FAIR LADY**

Book and Lyrics by Alan Jay Lerner
Music by Frederick Loewe
Adapted from Bernard Shaw's Play and
Gabriel Pascal's Motion Picture *Pygmalion*